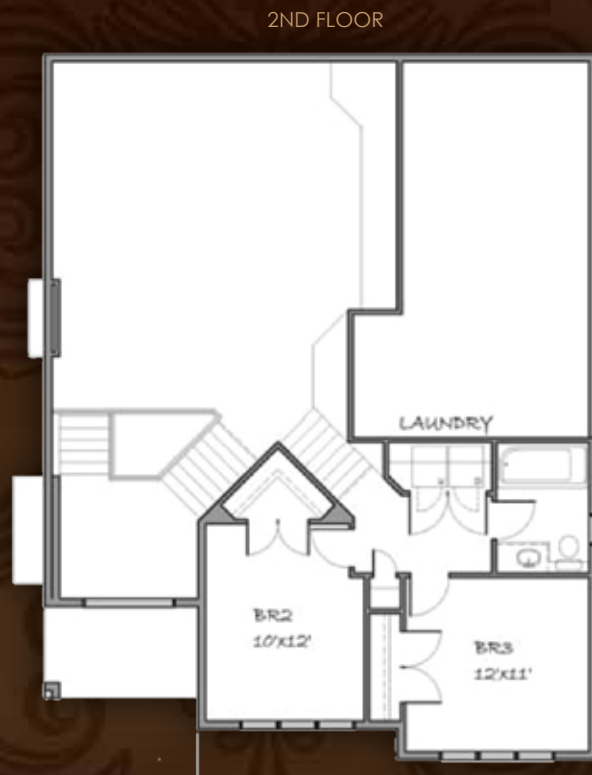




The Crescent

1558 sq. ft.
Modified Bi-Level

- High Efficiency Home
- Spacious 2 Car Garage (26' wide)
- Large Bedrooms with Upstairs Laundry
- Master Bedroom with 4 piece Ensuite
- Large Kitchen with Raised Eating Bar
- Large Open Entry
- Rod Iron Railing with Maple Handrail
- Gas Fireplace
- Hardwood & Tiled Floor
- Upgraded Throughout
- Finished Deck with Aluminum Railing



Homes by
CROSSLINK
Building for Life

www.CrosslinkGP.ca