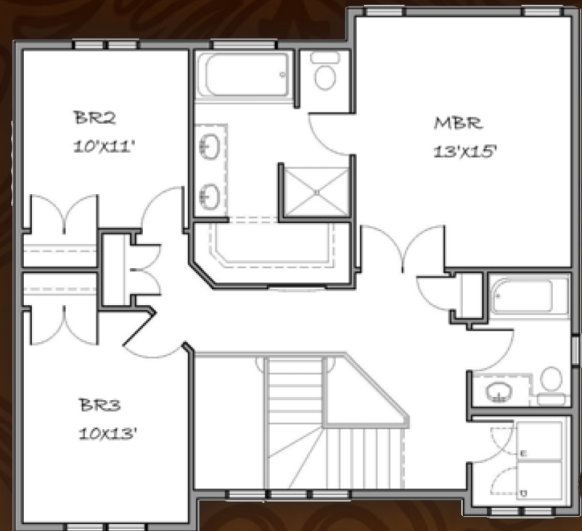
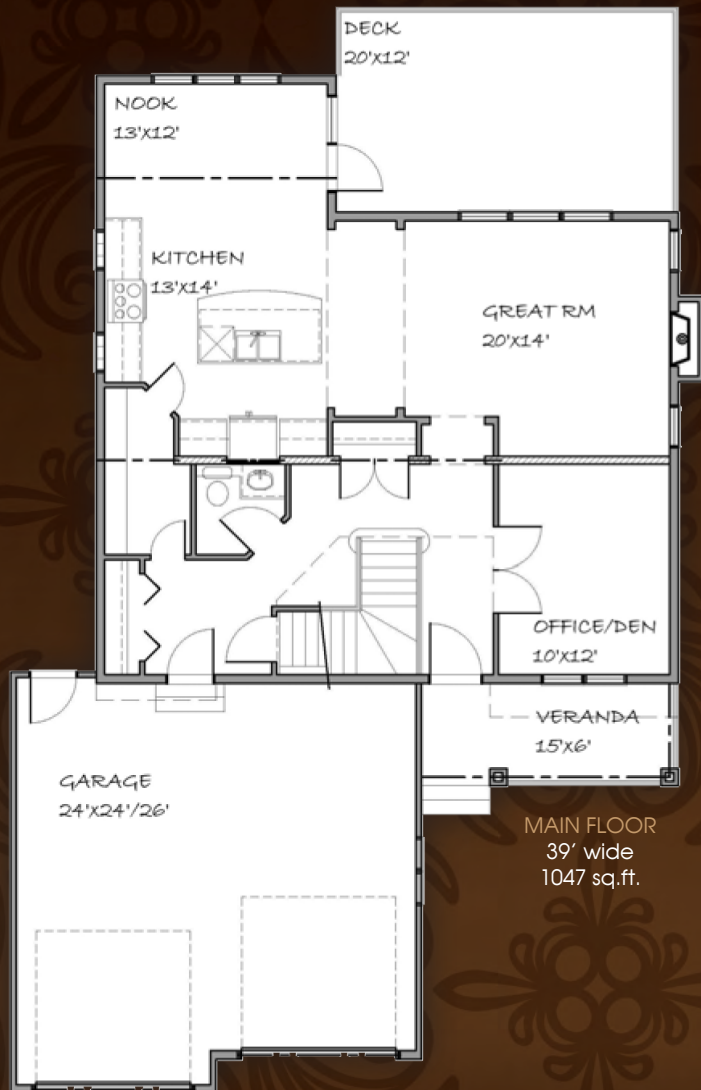


# The Madison

1938 sq.ft. Two Story

- High Efficiency Home
- Spacious 2 Car Garage
- Large Bedrooms with Upstairs Laundry
- Master Bedroom with 5 Piece Ensuite
- Large Walk-through Pantry
- Hardwood & Tile Floors
- Spacious Great Room with Gas Fireplace
- Office/Den with Double Garden Doors
- Upgraded Throughout
- Finished Deck with Aluminum Railing



UPPER FLOOR  
891 sq.ft.

Homes by  
**CROSSLINK**  
Building for Life

[www.CrosslinkGP.ca](http://www.CrosslinkGP.ca)