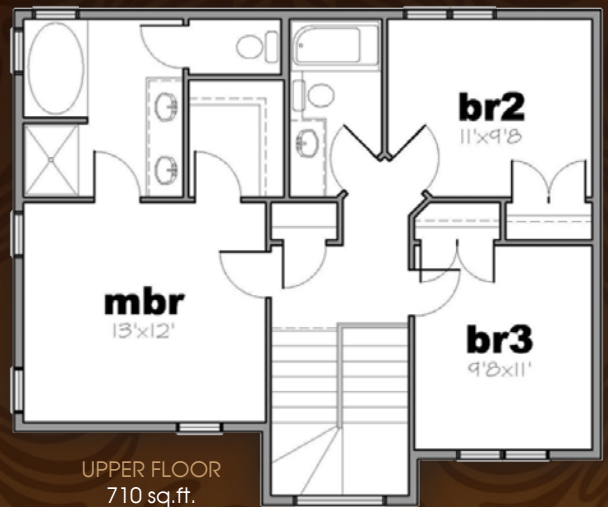
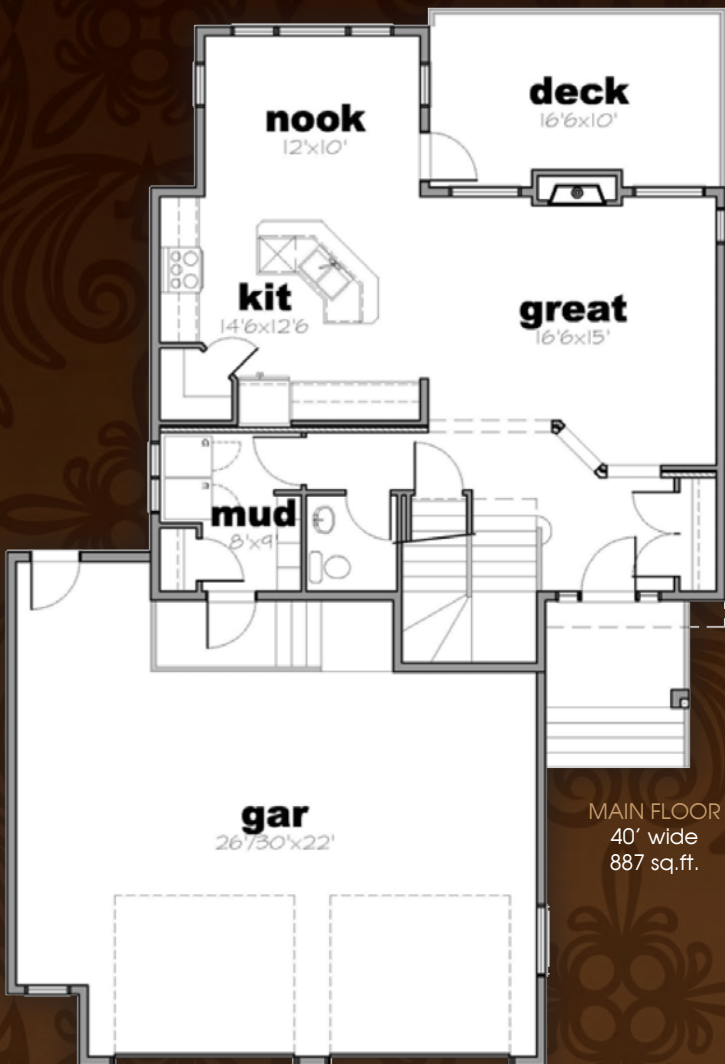


# The Pierce

1597 sq.ft. Two Story



- High Efficiency Home
- 2 1/2 Car Garage (30' wide) with 9' Doors
- Large Bedrooms with Generous Closets
- Master Bedroom with 5 Piece Ensuite
- Large Kitchen with Raised Eating Bar
- Open Entry
- Rod Iron Railing with Maple Handrail
- Large Rock Fireplace
- Main Floor Laundry
- Hardwood & Tiled Floor
- Upper Terrace with Vinyl Decking



Homes by  
**CROSSLINK**  
Building for Life

[www.CrosslinkGP.ca](http://www.CrosslinkGP.ca)